



**Signing Science Dictionary
User's Guide**

Welcome to the Signing Science Dictionary (SSD)!

The SSD is the first illustrated, interactive 3D sign language dictionary for students who are Deaf and Hard-of-Hearing and use American Sign Language (ASL) or Signed English (SE) in the classroom. It also serves as a resource for teachers and parents.

TERC, in collaboration with Vcom3D, used SigningAvatar® accessibility software to animate 1,300 science terms and definitions. The SSD supports access to standards-based science content among elementary and middle grade students.

System Requirements:

- ❖ 500 MHz PC computer
- ❖ 128 MB RAM
- ❖ 8MB OpenGL® accelerated graphics card
- ❖ Windows® 2000/XP®/Vista
- ❖ Microsoft Internet Explorer® 6 or higher
- ❖ CD-ROM Drive
- ❖ 1024x768 monitor with 16-bits of color
- ❖ 100MB Hard Drive space

In this Guide, you will learn how to:

- ❖ Use the Graphical User Interface
- ❖ Use the SigningAvatar® Window
- ❖ Access additional resources online

Vcom3D, Inc.
3452 Lake Lynda Drive, Suite 260
Orlando, Florida 32817
Phone 407.737.7310
Fax 407.737.6821
Email customerservice@vcom3d.com



Text, and pictures and interface were developed by and are copyrighted by TERC, Cambridge, Massachusetts. ©TERC, Inc. All rights reserved. SigningAvatar® animation technology ©Vcom3D, Inc. All rights reserved. Any reproduction in whole or in part is strictly prohibited.

The SSD was developed by TERC and Vcom3D and funded in part by the National Science Foundation, Grant 0533057. The SSD was also funded in part by NEC Foundation of America and the U.S. Department of Education. All opinions, findings, conclusions, and recommendations expressed herein are those of the authors and do not necessarily reflect the views of the funders.



Table of Contents

Installation Instructions	1
Installing Additional Programs	1
Running the SSD	1
Support and Updates	1
Getting to Know the SSD	2
Welcome Page	2
Dictionary Page	2
Alphabet Page.....	2
Tutorials	3
Activities 1 and 2.....	3
Viewing the Movie.....	3
Terms	3
Using the Search Feature	3
Using the Alphabet Page	3
Using the Letter List Icon.....	3
Using the Previous Word Icon.....	4
Going to Terms within a Definition	4
Pictures	4
Opening a Picture	4
Moving a Picture	4
Closing a Picture	4
Text Size	4
Changing Text Size	4
ASL or SE	5
Using the ASL Icon	5
Using the SE Icon	5
Using the SigningAvatar® Character Window	5
Selecting a SigningAvatar Character.....	5
Changing the Signing Speed	5
Changing the Background Color	6
Using the Navigation Button	6
Additional Online Resources	6
Glossary of Icons	7

Installation Instructions

To install the Signing Science Dictionary, place the CD in your CD or DVD player.

The setup should start automatically. If it doesn't, navigate to the CD from "My Computer" and double-click on setup.exe.

Once installed, the application icon will appear in Start->Programs->Signing Science Dictionary->Signing Science Dictionary or double click the Desktop Shortcut named Signing Science Dictionary.

The application will be installed under:

C:\Program Files\Vcom3D\Signing Science Dictionary\

For Mac Users who are using Parallels and a Windows OS, follow the Windows installation instructions above.

Installing Additional Programs

To use the SSD and several of its features, you will need Internet Explorer, Adobe Reader and Adobe Flash Player. These programs are all free to download. Follow the directions below to download each one.

To install *Internet Explorer*, you must have a Windows Operating System on your computer. Go to the Microsoft home page at www.microsoft.com. There is a section titled "Popular Downloads". Internet Explorer 7 is listed there. Click that link to go to the download page and follow the instructions there.

To view the User's Guide and two activities on the Welcome Page of the SSD, you will need *Adobe Reader*. To view the tutorial movie activity on the Welcome Page of the SSD, you will need *Adobe Flash Player*. To download both of these players, go to www.adobe.com. On their home page, you will see buttons to download each of these. Simply click on these links and follow the instructions.

Running the SSD

Following installation, you can run the SSD by clicking the Start button - Programs - Signing Science Dictionary - Signing Science Dictionary - or double clicking the Desktop Shortcut called "Signing Science Dictionary". You can also find the program at C:\Program Files\Vcom3D\Signing Science Dictionary\.

Support and Updates

Access the Vcom3D Online Support page directly by clicking the Start button - Programs - Signing Science Dictionary - Online Support. You will find a support request form as well as updates to the product.

Getting to Know the SSD

Welcome Page

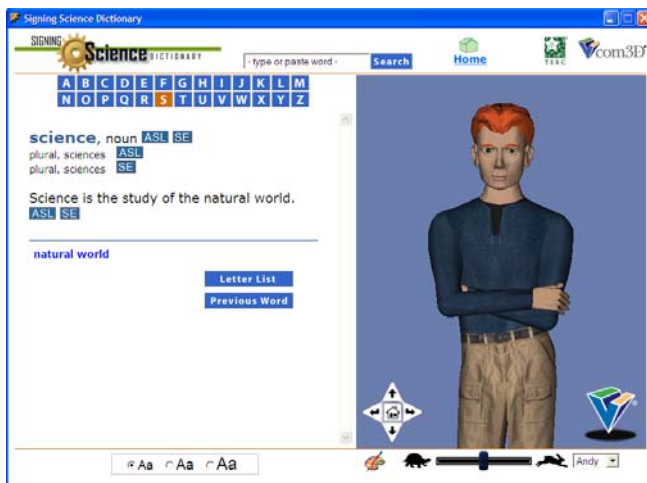
The Welcome Page of the SSD is your home page. Throughout the program, you can click on the SSD logo in the top left corner or the Home icon to return to this page.

From the Welcome Page, you can access the alphabetical listings of the dictionary terms, view the Activity Tutorials and watch the Tutorial Movie, or link to the Credits Page.



Dictionary Page

The Dictionary Page contains the information for each Term included in the SSD. Each dictionary listing contains the word, part of speech, definition and in some cases, a picture. Words within each definition are listed below and can be linked to with one click. You can return to the word previously visited by clicking the Previous Word icon or return to the Alphabet Page by clicking the Letter List icon.



Alphabet Page

The Alphabet Page gives you access to the complete alphabetical listing of terms for each letter. From here, you can click a term and go to its Dictionary Page.



Tutorials

Activities 1 and 2

Each activity can be accessed from the Welcome page. Both activities will walk you and your students through the easy to use SSD interface and familiarize you with the icons. The activities are also available as PDFs. To view them, you will need Adobe Reader.

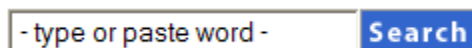
Viewing the Movie

The movie can be accessed from the Welcome Page. It will open in a new window and play when you click the Play button. The movie is similar to the activities in that it introduces you and your students to the SSD interface and icons.

Terms

Using the Search Feature

You can use the Search Feature to find a specific term. Type or copy and paste the term into the text box and click the Search icon. The Dictionary page for that term will appear. If the term is not included in the SSD, a selection of words most closely related to it will appear. You can select one of these. If there are no close matches, the Alphabet Page that corresponds to the first letter of the term you are looking for will appear.



Using the Alphabet Page

To look up the definition of a term, you can go to the Alphabet Page for that term. When you find the term, click on it and you will go to the Dictionary Page for that term.



Using the Letter List Icon

A Letter List Icon appears on each Dictionary Page. Clicking this icon takes you back to the Alphabet Page for the term you are viewing. For example, if you are on the Dictionary Page for the word "telescope" - clicking the Letter List Icon will take you to the alphabetical listing of all words that start with the letter "T".



Using the Previous Word Icon

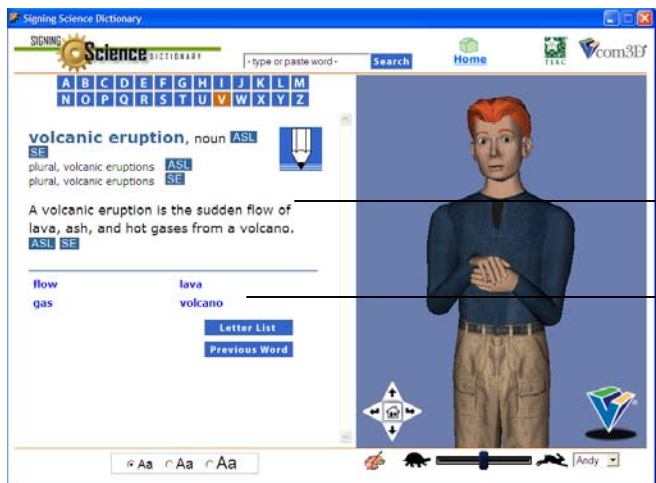
A Previous Word Icon appears on each Dictionary Page. Clicking this icon takes you back to the Dictionary Page for the term you last viewed.

Previous Word

Going to Terms within a Definition

You can select a word in a definition and the SigningAvatar character will sign that word.

Below many definitions, you will find a list of terms within the definition that are included in the SSD. Clicking on these terms takes you to its Dictionary Page. Clicking the Previous Word Icon takes you back to the page you were viewing.



The screenshot shows the Signing Science Dictionary interface. On the left, the definition for 'volcanic eruption' is displayed, including its part of speech (noun), ASL and SE icons, and a list of related terms: 'flow', 'gas', 'lava', and 'volcano'. On the right, a 3D avatar character is shown signing. Two callout boxes with arrows point to the interface: one points to the definition text and the other points to the list of terms.

Select any word and the SigningAvatar character will sign.

List of terms from within the definition.

Pictures

Many Dictionary Pages include a picture to illustrate the definition for the term.

Opening a Picture

Click the Picture Icon to open the picture. The picture will appear below the definition.



Moving a Picture

To reposition a picture, click the top gray bar above the illustration and drag the picture to the desired location. The picture can be moved around the left side of the Dictionary Page only.

Closing a Picture

To close a picture, click on the "X" in the top right corner of the picture.

Text Size

Changing Text Size

There are three text sizes from which to choose. The default is the smallest text size. Selecting a larger text size will change the text size for the entire SSD.

◦ Aa ◦ Aa ◦ Aa

ASL or SE

For each section of text, you have the choice of seeing the SigningAvatar character sign in American Sign Language (ASL) or Signed English (SE).

Using the ASL Icon

Click the ASL Icon to see the SigningAvatar character sign the text in American Sign Language.

ASL

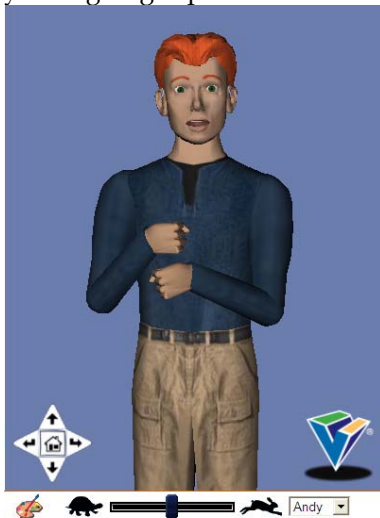
Using the SE Icon

Click the SE Icon to see the SigningAvatar character sign the text in Signed English.

SE

Using the SigningAvatar® Character Window

The right side of the SSD is the SigningAvatar Character Window. This is the area where you control your signing experience.



Selecting a SigningAvatar Character

Use the drop down menu on the bottom right corner of the SigningAvatar Character Window to choose a SigningAvatar character. You can choose from Andy, Maria, Pete (the surfer lizard), Shaun, Tonya, and Trish.



Changing the Signing Speed

Slide the center bar toward the turtle (to the left) to slow down the signing speed. Slide the center bar toward the rabbit (to the right) to speed up the signing speed.



Changing the Background Color

Click a colored dot on the Background Color Icon to select a background color. You can select from a palette of seven colors.



Using the Navigation Button

The Navigation button allows you to move the SigningAvatar character within the SigningAvatar Character Window.



Click the Up arrow to zoom in.

Click the Down arrow to zoom out.

Click the Left and Right arrows to rotate the character to the left or right.

Click the Home icon in the center to return to the default view.

Additional Online Resources

Please connect to the Internet and visit the following web sites for additional information about the SSD product and its developers.

- ❖ TERC - www.terc.edu - Click "Special Needs" to learn about other TERC products for students with disabilities and "Signing Science" to learn about other SigningAvatar®-enabled instructional materials.
- ❖ Vcom3D, Inc. - www.Vcom3D.com - Visit Vcom3D to learn about our other Sign Smith sign language products, to visit the online store, or request support for this product.
- ❖ YouTube - <http://www.youtube.com/user/Vcom3D> - View "The Forest" and other Vcom3D videos to see how our characters are helping with elearning, sign language accessibility, and research.
- ❖ EnViSci Network - www.enviscinetwork.com - The units are SigningAvatar®-enabled and use the same plug-in as the SSD. Click a unit name to find out about the unit and click "Charlesbridge" for ordering information.
- ❖ Online Scienceathon - <http://scithon.terc.edu/> - The virtual versions of the challenges are SigningAvatar®-enabled and use the same plug-in as the SSD. Click "Virtual Version" to access these challenges.
- ❖ Adobe - www.adobe.com - Download the free Adobe Reader and Adobe Flash Player.
- ❖ Microsoft - www.microsoft.com - Download a version of Internet Explorer.
- ❖ Signing Science - www.signsci.terc.edu - See a sample of upcoming products like the Signing Science Pictionary for grades K-3 and the Signing Math Dictionary.

Glossary of Icons

	<p>Click the Home icon at any time during the program to return to the main window.</p>
	<p>Alternatively you can click on the SSD logo icon to return to the main window at any time.</p>
	<p>Click the Vcom3D logo to go to www.Vcom3D.com in an alternate window.</p>
	<p>Click the TERC logo to go to www.TERC.edu in an alternate window.</p>
	<p>Click the NSF logo to go to www.NSF.gov in an alternate window.</p>
	<p>Click the Department of Education logo to go to www.ED.gov in an alternate window.</p>
	<p>Click the NEC logo to go to www.NECfoundation.org in an alternate window.</p>
<p>Movie</p>	<p>Click on the Movie link on the main page to view a video demonstration of how to use the SSD. Flash player 6 or higher is required to view the video.</p>
<p>Activity 1</p>	<p>For a written tutorial, click on the Activity 1 link on the main page.</p>
<p>Activity 2</p>	<p>You can see another written tutorial by clicking on the Activity 2 link on the main page.</p>
<p>⦿ Aa ⦿ Aa ⦿ Aa</p>	<p>Click to control font sizes within the program.</p>
<p>- type or paste word - Search</p>	<p>Search for specific words in the program.</p>
	<p>Click on the Illustration button to view a picture demonstrating the word. You can move the picture around the left side of the screen. Click "X" to remove the picture.</p>
	<p>Browse for words alphabetically by clicking on the desired letter button.</p>
<p>Letter List</p>	<p>While on a definition page, click the Letter List button to go to the alphabetical letter list for that word.</p>
<p>Previous Word</p>	<p>Click to go to the last word visited.</p>
<p>ASL</p>	<p>Click the ASL button to have the character sign a block of text in American Sign Language.</p>
<p>SE</p>	<p>Click the SE button to have the character sign a block of text in Signed English.</p>



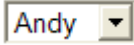
The Navigation buttons will allow you to move the SigningAvatar character within the 3D environment.

Click the up arrow to zoom in.

Click the down arrow to zoom out.

The left and right arrows rotate the character to the left and right respectively.

Click the Home icon in the center to return you to the default view.



Use the Character Drop Down Menu to select a SigningAvatar character.



To control the speed of signing, slide to the turtle for a slower signing speed and slide to the rabbit for a faster signing speed.



Click the Background Color Selection icon to cycle through your choice of seven background colors.